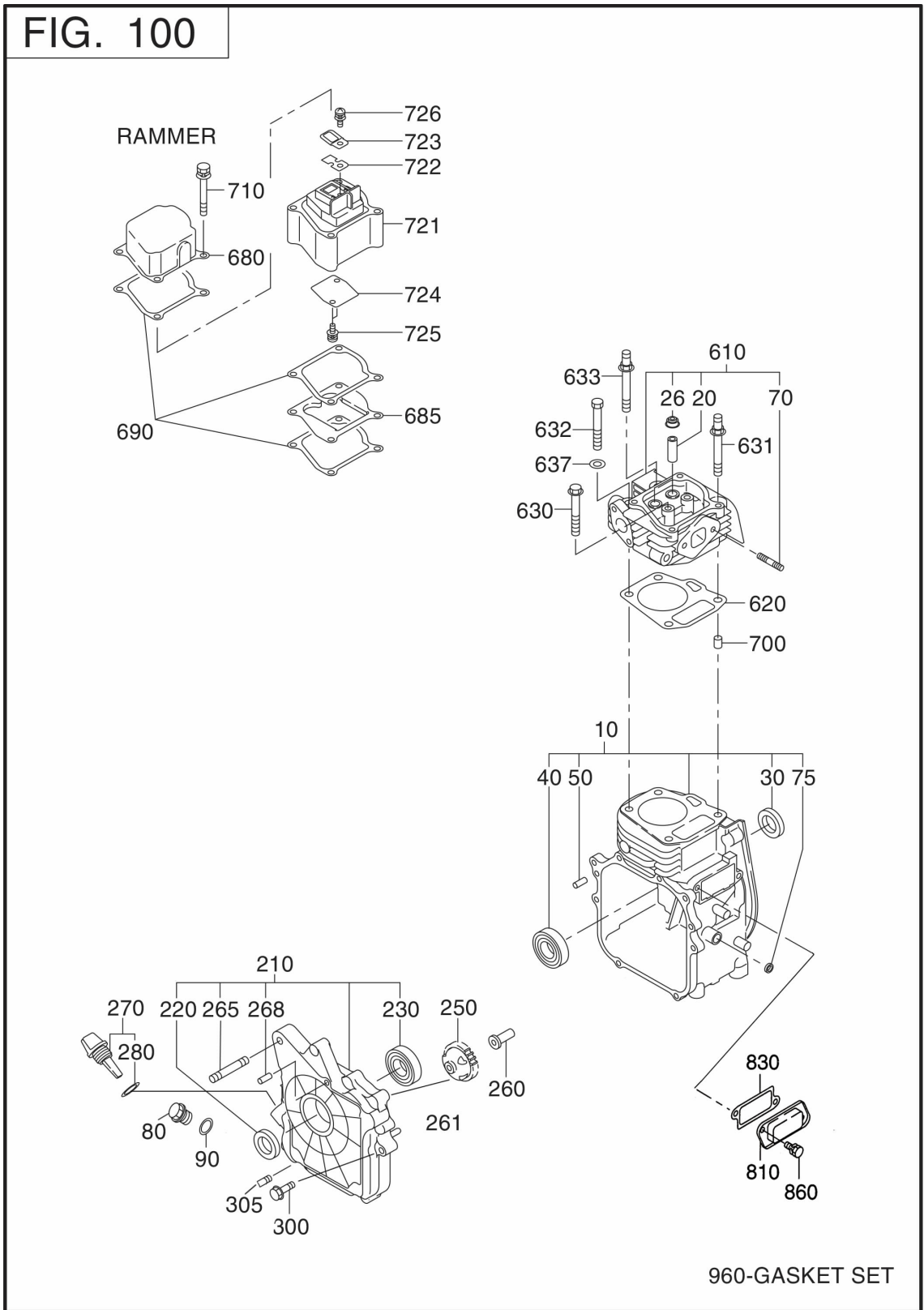


# 1 CRANKCASE

FIG. 100



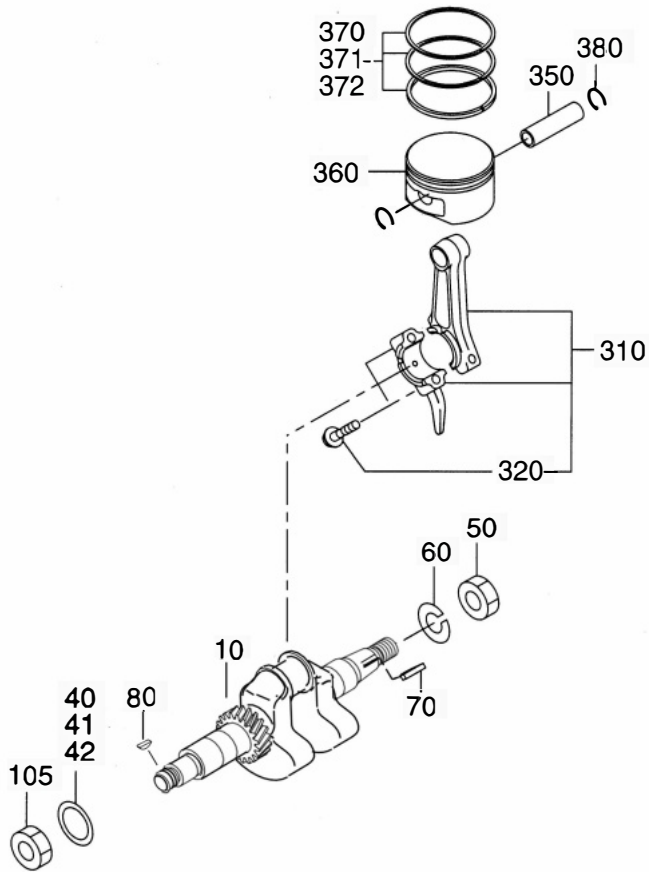
# 1 CRANKCASE

REF. NO.	PART NUMBER	PART NAME		QTY	REMARKS	FIG.NO.
			SPEC.NO.			
10	20F-10109-H1	CRANKCASE CP		1		100
20	20F-14201-03	VALVE GUIDE		2	5.5DX9.5DX27L	100
26	20F-16010-01	STEM SEAL		1	5.5DX9.5DX15DX7.8B	100
30	044-02000-70	OIL SEAL		1	20DX32DX6B	100
40	X60-02002-00	BALL BEARING		1	20DX42DX12B	100
50	X31-00600-50	DOWEL PIN		2	6DX14.5L	100
70	X10-50604-90	STUD		2	M6X1.0X80L	100
75	20F-00600-20	OIL SEAL		1	6DX10DX2.5B	100
80	20F-11400-30	PLUG		1	M14X1.5X20DX12L	100
90	X21-11400-30	GASKET		1	14.1DX19DX2.3T	100
210	20F-11101-51	MAINBEARING COVER CP		1		100
220	044-02001-10	OIL SEAL		1	20DX32DX6B	100
230	X60-02002-00	BALL BEARING		1	20DX42DX12B	100
250	284-45003-H1	GOVERNOR GEAR CP		1		100
260	205-41901-H3	GOVERNOR SLEEVE		1		100
261	230-46201-03	GOVERNOR GEAR SHAFT		1		100
265	001-39085-00	STUD		4		100
268	X31-00600-50	DOWEL PIN		2	6DX14.5L	100
270	20F-63601-11	OIL GAUGE CP		1	M18X1.5	100
280	X21-31600-30	GASKET		1	16DX23DX1.2T	100
300	20F-00602-00	BOLT AND WASHER AY		11	M6X1.0X30L W/SW	100
305	011-90501-00	BOLT(SOCKET HEAD)		1	M5X20L	100
610	20F-13011-01	CYLINDER HEAD AY		1		100
620	284-15001-H3	GASKET (HEAD)		1	T=0.2	100
630	20F-00802-10	FLANGE BOLT		2	M8X1.25X16DX55L	100
631	20F-00804-10	BOLT		2	M8X55L-M8X12.5L	100
680	20F-15502-03	ROCKER COVER		1		100
685	20F-14502-03	OIL SHELTER PLATE 2		1		100
690	284-16007-03	GASKET(ROCKER COVER)		3	T=0.5	100
700	20F-15011-03	PIPE KNOCK		2	10.3DX8.5DX14L	100
710	20F-00607-40	FLANGE BOLT		4	M6X1.0X11DX75L	100
721	20F-15602-13	BREATHER PLATE		1		100
722	284-16001-03	LEAF VALVE		1		100
723	284-16002-H3	RETAINER PLATE		1		100
724	284-14501-H3	OIL SHELTER PLATE1		1		100
725	013-10500-20	SCREW & WASHER AY		2	M5X0.8X10L W/W,SW	100
726	013-10500-20	SCREW & WASHER AY		1	M5X0.8X10L W/W,SW	100
810	284-17001-H3	COVER(CASE)		1		100



# 2 CRANKSHAFT, PISTON GR

FIG. 200

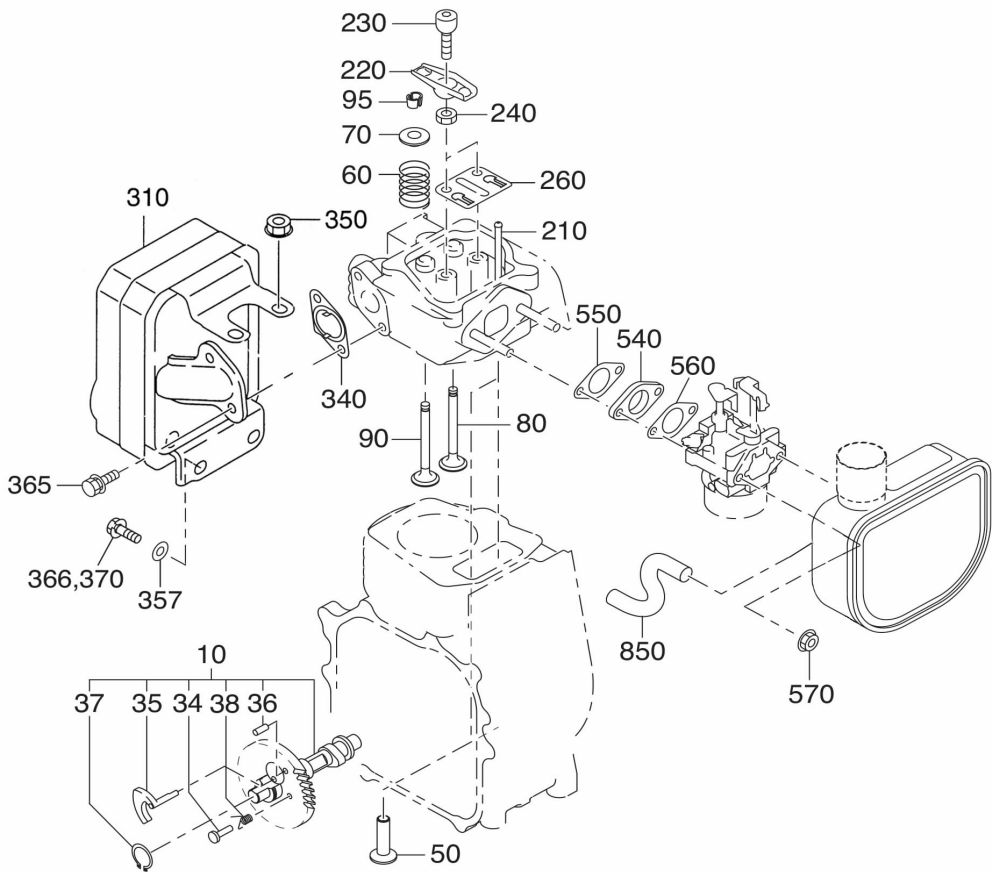




# 3 INTAKE, EXHAUST

FIG. 300

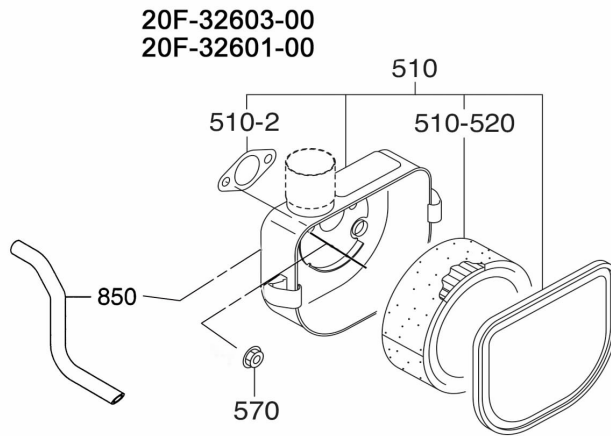
RAMMER





### 3 INTAKE, EXHAUST

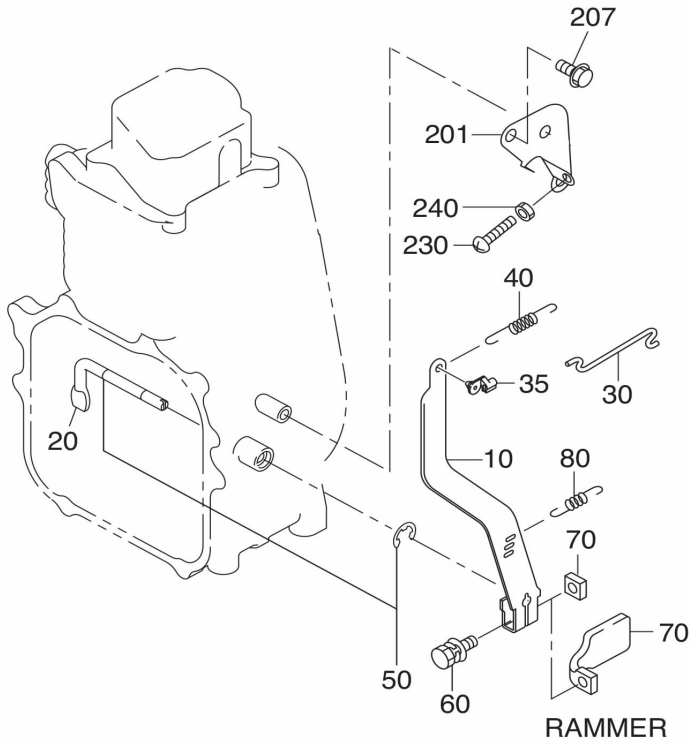
FIG. 315



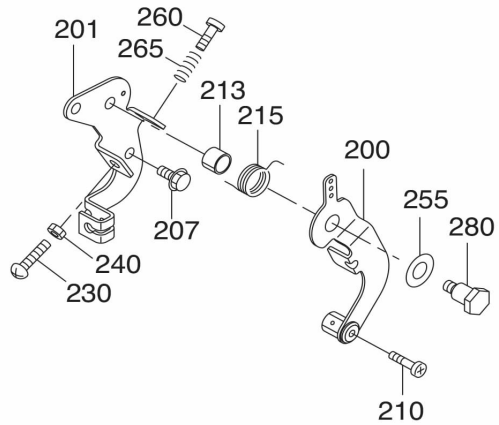


# 4 GOVERNOR, OPERATION

FIG. 400



## CABLE CONTROL



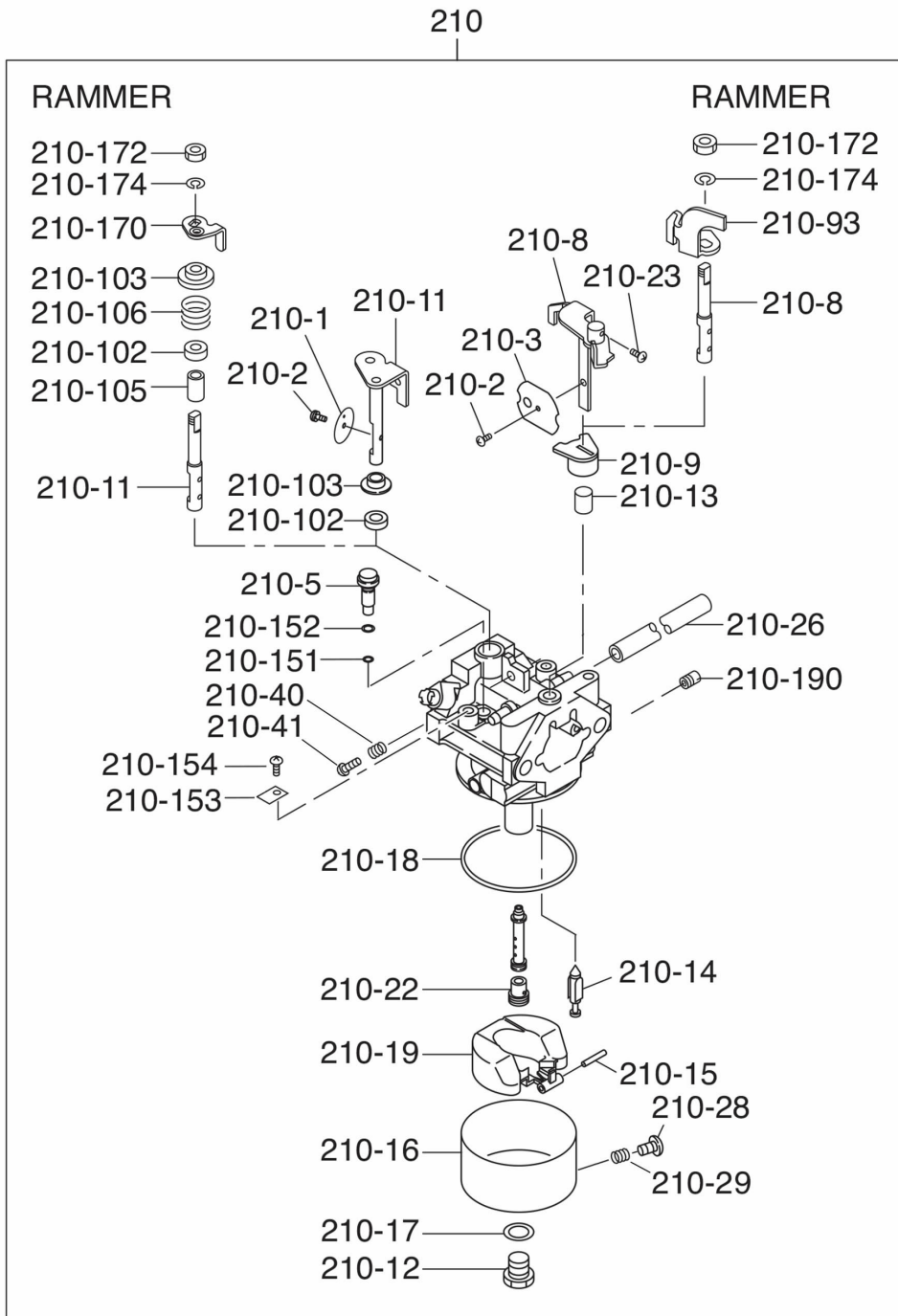






# 6 FUEL LUBRICANT

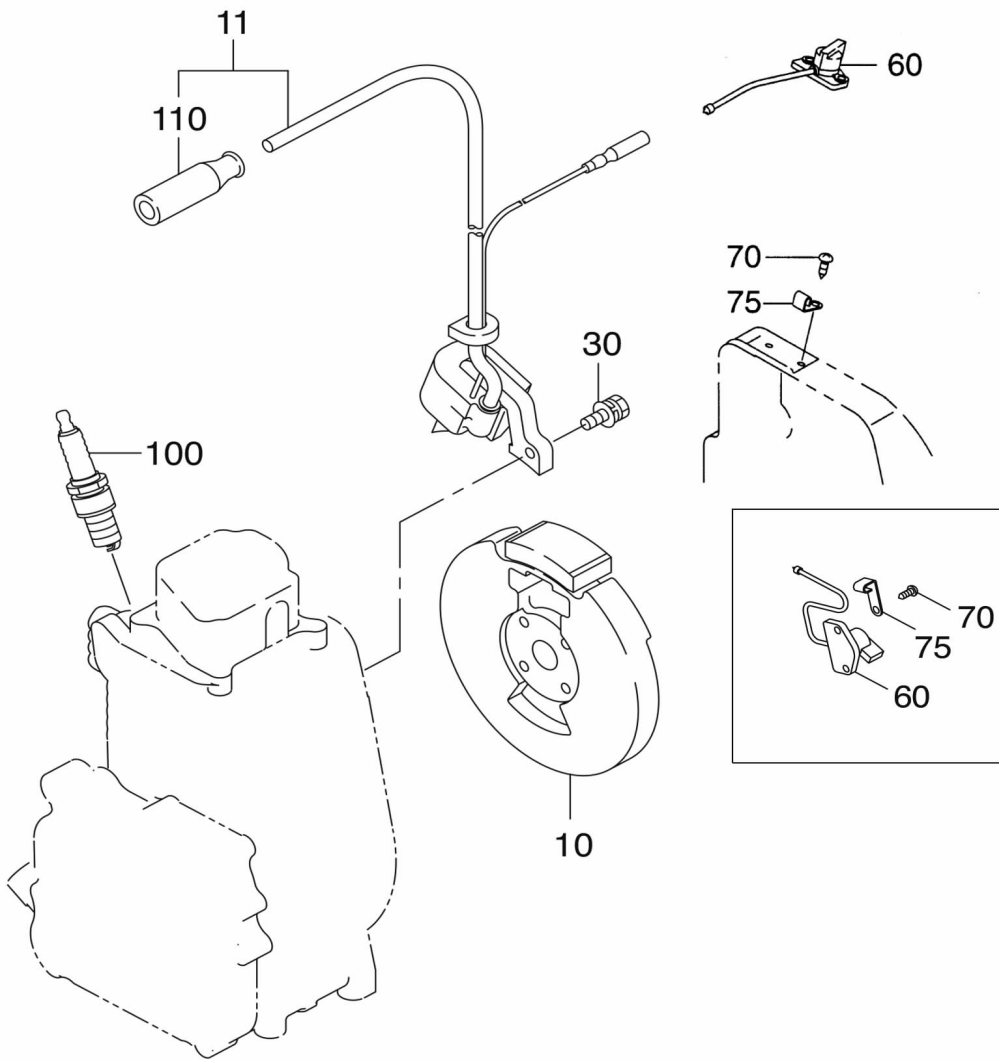
FIG. 640





# 7 ELECTRIC DEVICE GR

FIG 700

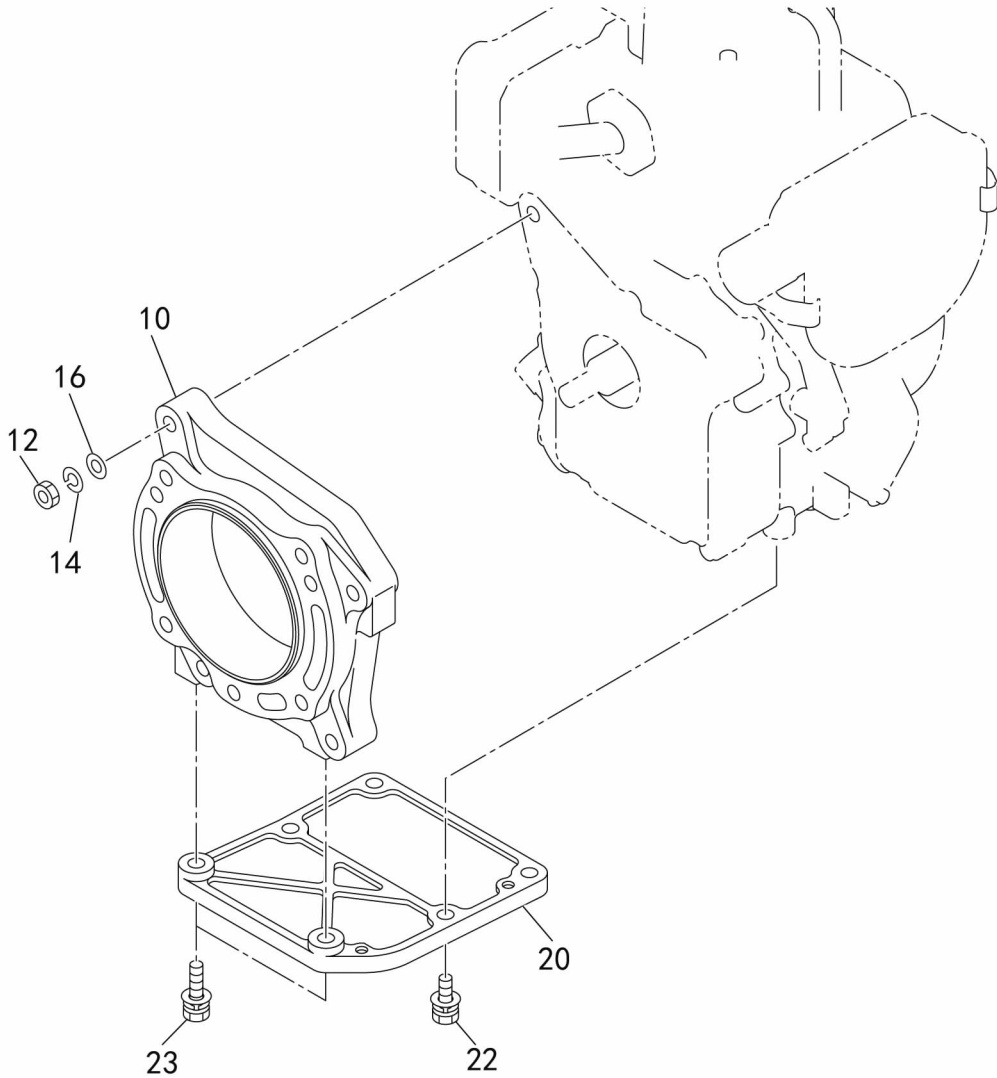




# 10. PARTS TO BE SHIPPED LOOSE

FIG 1000

RAM type





# 11. PARTS TO BE SHIPPED LOOSE

FIG 1001

RAM type

